



Bespoke Furniture

Handcrafted furniture  
with a sense of style

*Bespoke*

# FITTED FURNITURE

*Entrance Wardrobe // TV Unit  
// Bookshelves & Cupboards //  
Toy storage*

info@spindlelegs.co.uk



SPINDLELEGS



+44 (0) 7971 708027



A slide with a background image of a wooden sign that reads "MISSION STATEMENT". The sign text says: "At Spindlelegs - Bespoke Furniture we create stylish fitted furniture which is beautifully designed to complement your home. Our fitted furniture is handmade both in a workshop and on-site in your home."

05

Mission Statement

A slide with a background image of a room with bookshelves. A sign in the foreground says "ASK".

06

01 Ask [Define Requirements]

A slide with a background image of a newspaper clipping titled "RESEARCH & IMAGIN". The clipping discusses "Problem Solving" and mentions "The supporting bookshelves and cupboards were always looking to match the interior of this Victorian Long terrace. So maximising storage within the alcove along with complementing the existing skirting board was a key objective."

07

Research [Problem Solving]

A slide with a background image of a room with bookshelves. A sign in the foreground says "08".

08

03 Imagine [Possible Solutions]

A slide with a background image of a room with bookshelves. A sign in the foreground says "09".

09

04 Planning [Down-Selecting]

A slide with a background image of a room with bookshelves. A sign in the foreground says "10".

10

05 Create [Build the Vision]

A slide with a background image of a room with bookshelves. A sign in the foreground says "13".

13

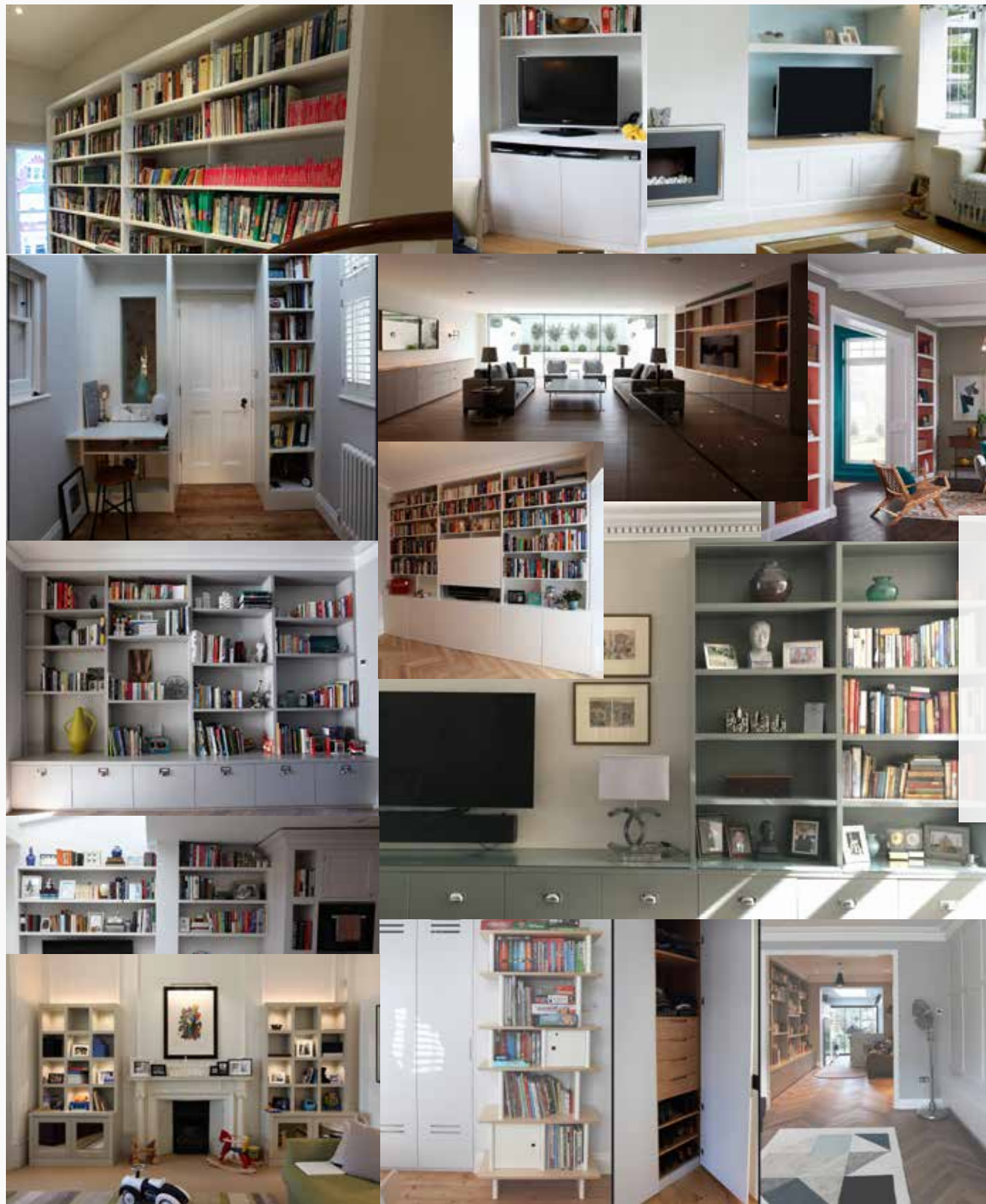
06 Sign-off [Final Design]

# MISSION STATEMENT

At Spindlelegs - Bespoke Furniture we create stylish fitted furniture which is beautifully designed to complement your home. Our fitted furniture is handmade both in a workshop and on-site in your home.







# ASK

Define Requirements



## Title only three

The supporting bookshelves and cupboards were always looking to match the interior star of this Victorian London terrace. So maximising storage within the alcoves along with complimenting the oversize skirting boards and decorative ceiling had already dictated the design direction of these ground floor fitted pieces

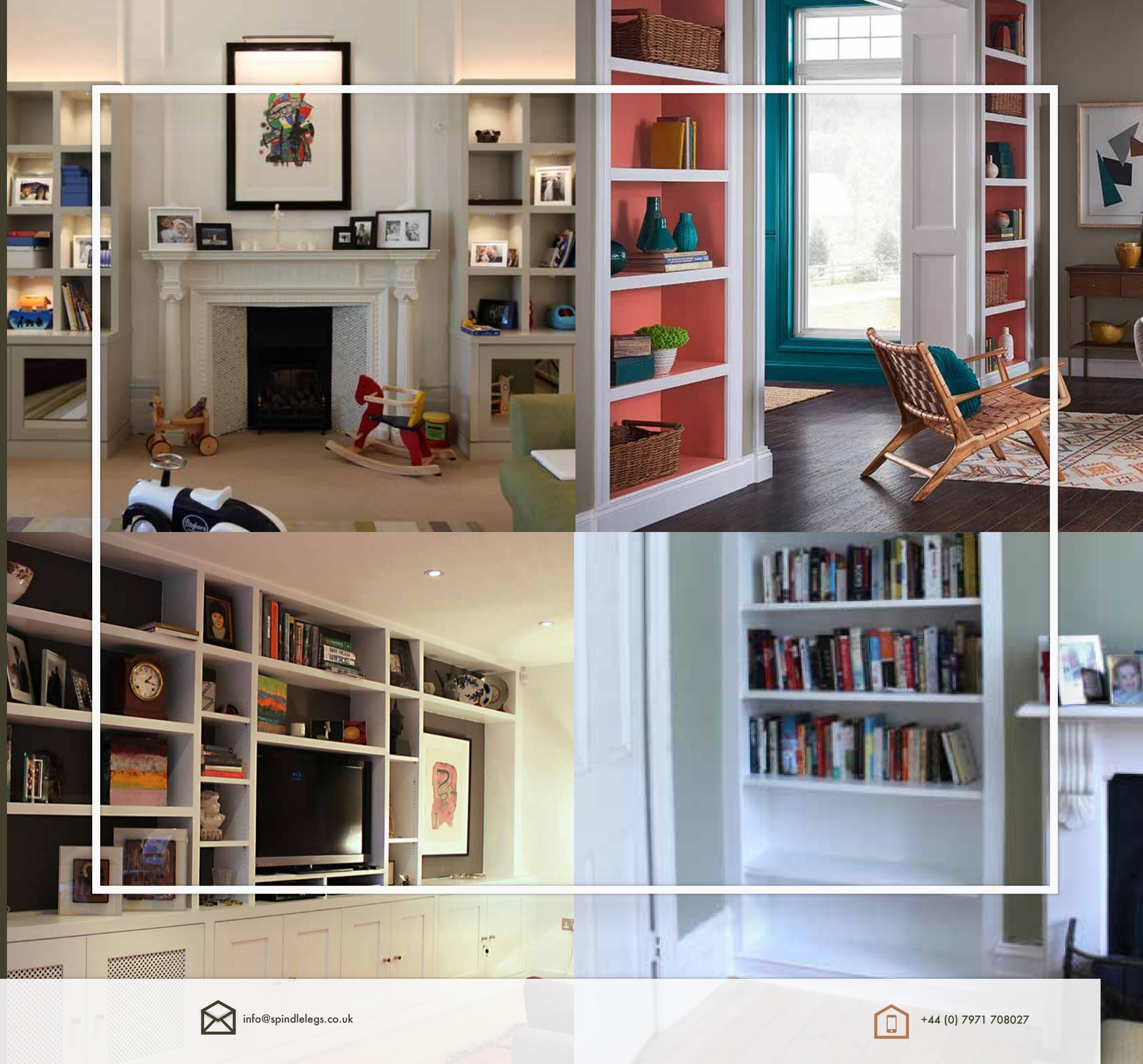


Clean.  
Simple.  
Professional.

## Wardrobe, TV Unit, bookshelves and cupboards and childrens toy storage.

Simplicity was always leading the way with this install and build. Clean lines, horizontal symmetry and a form-follows-function aesthetic.

This collection of bespoke furniture was always going to be the canvas and not the hero pieces that the homeowners were looking to add at a later date.







# RESEARCH & IMAGINE

Problem Solving & Possible Solutions



## Problem Solving

The supporting bookshelves and cupboards were always looking to match the interior star of this Victorian London terrace. So maximising storage within the alcoves along with complimenting the oversize skirting boards and decorative ceiling had already dictated the design direction of these ground floor fitted pieces

## Possible Solutions

There was always a view that these units would need to solve many storage issues. Both from an AV perspective with the entertainment centre, but also as this was a family house so managing children's mess was a key prerogative.

# PLANNING

Down-Selecting

## Organisation

There are some constraints with MDF sheet and maximum sizes. Building custom oversized furniture does impact design decisions from the planning stage

## Tolerances

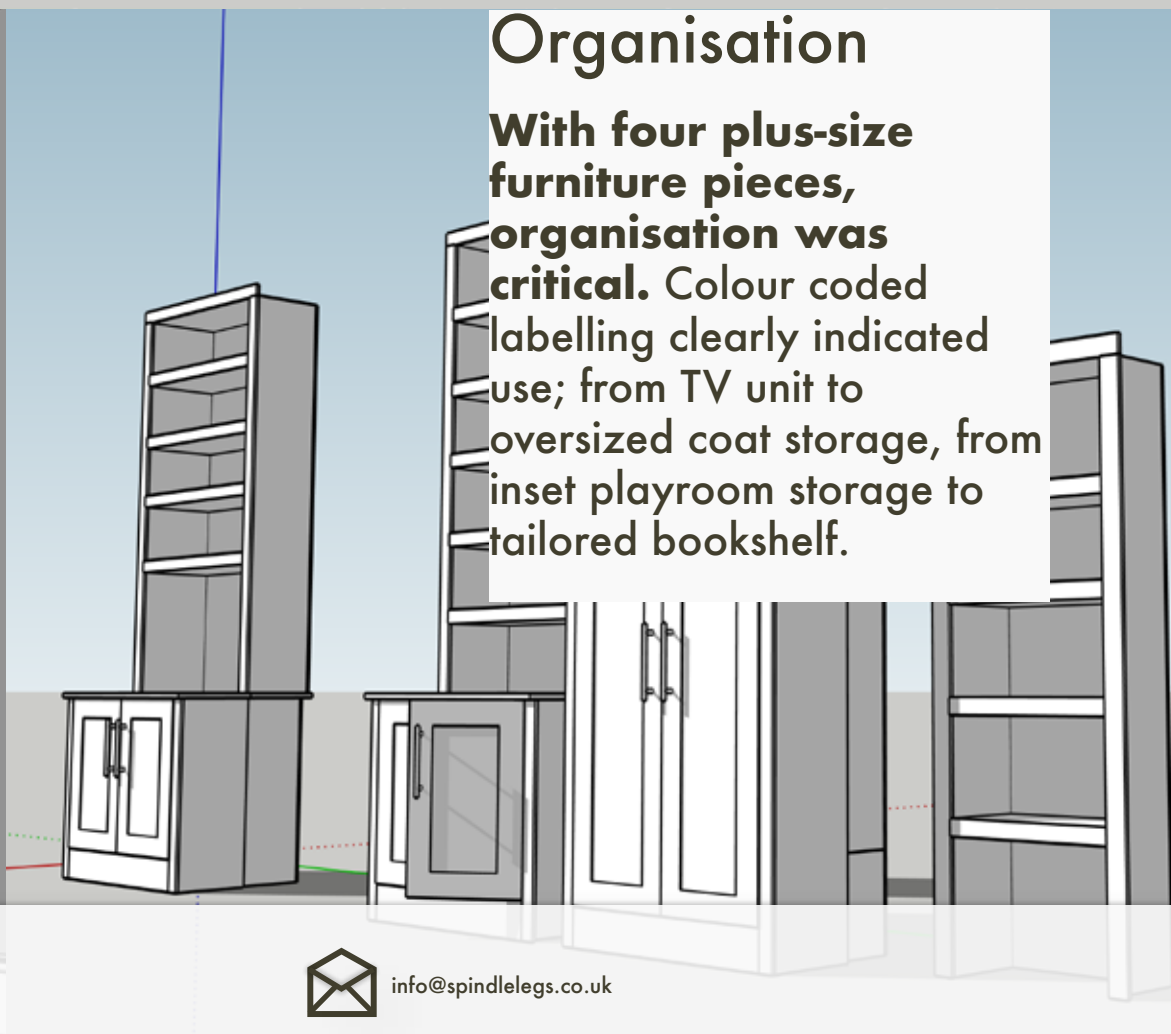
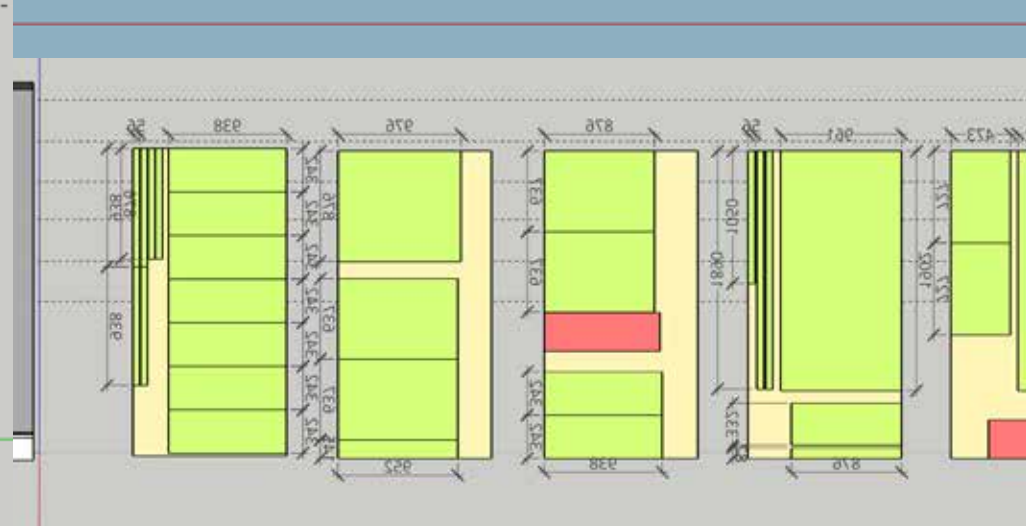
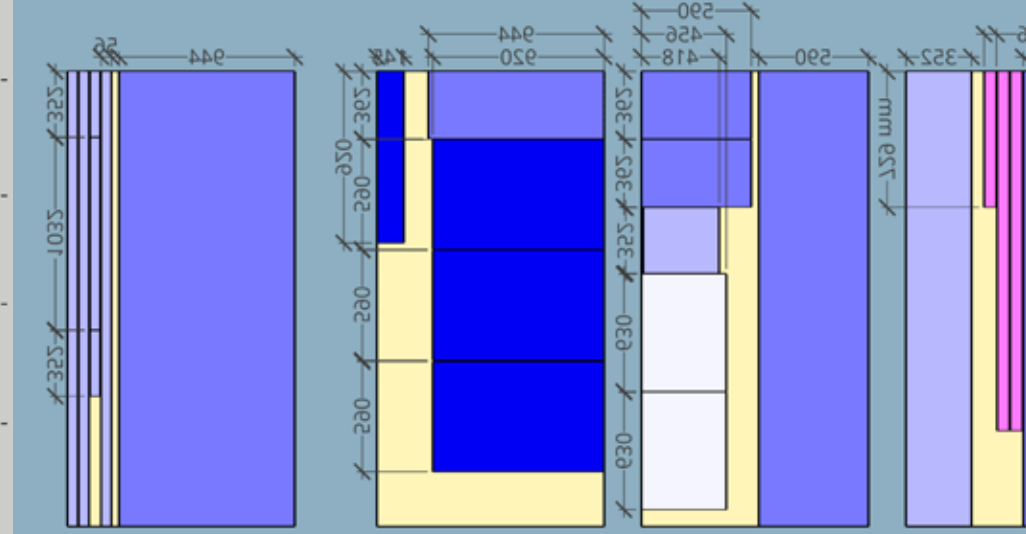
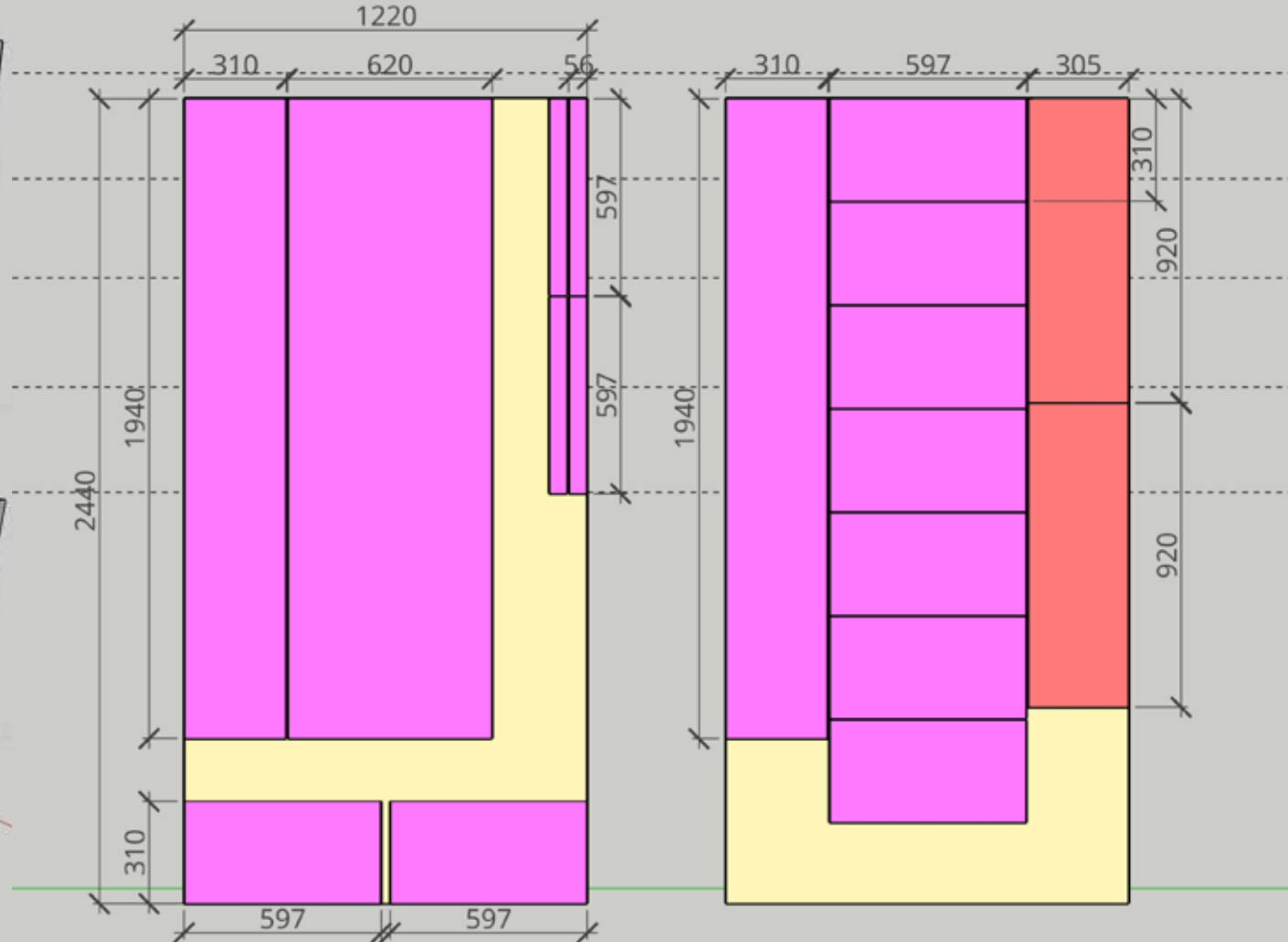
Accuracy was a key driver; some 300+ MDF sheets, varying in thickness from 6 - 24 millimetres were pre-cut and delivered on-site as part of the down-selecting process.

## Organisation

With four plus-size furniture pieces, **organisation was critical**. Colour coded labelling clearly indicated use; from TV unit to oversized coat storage, from inset playroom storage to tailored bookshelf.

Colours were paired-up with internal plans, 3D drawings and deliveries.

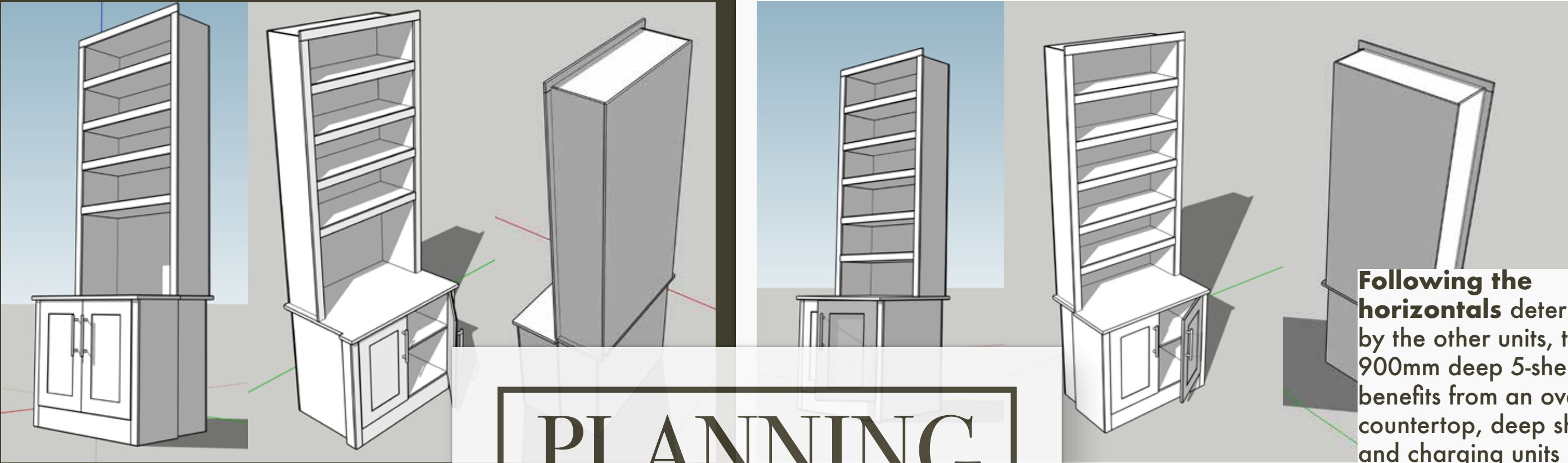




## Organisation

**With four plus-size furniture pieces, organisation was critical.** Colour coded labelling clearly indicated use; from TV unit to oversized coat storage, from inset playroom storage to tailored bookshelf.

Mirroring the 5-shelf unit but with the custom implementation of a flat screen TV is both utilitarian and consistent.

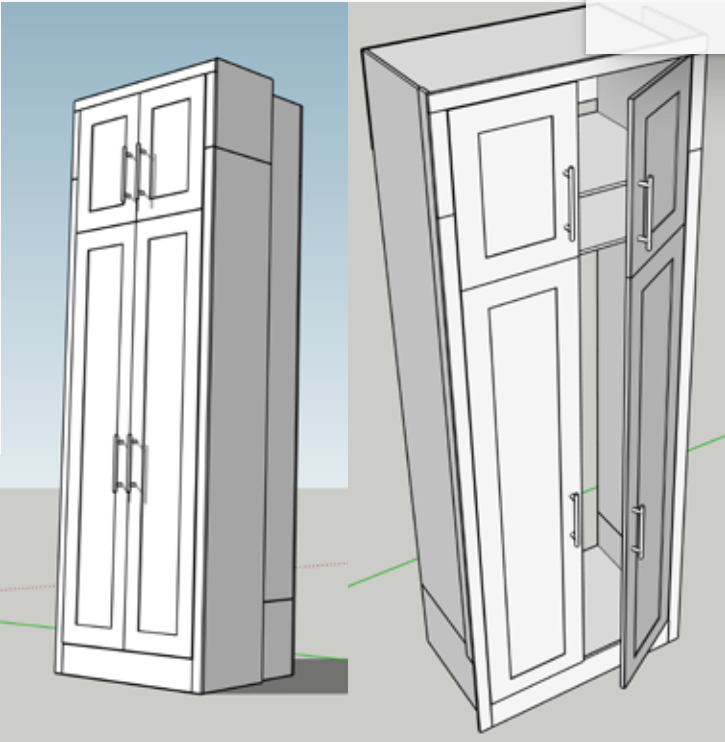


Following the **horizontals** determined by the other units, this 900mm deep 5-shelf unit benefits from an oversized countertop, deep shelves and charging units built-in.

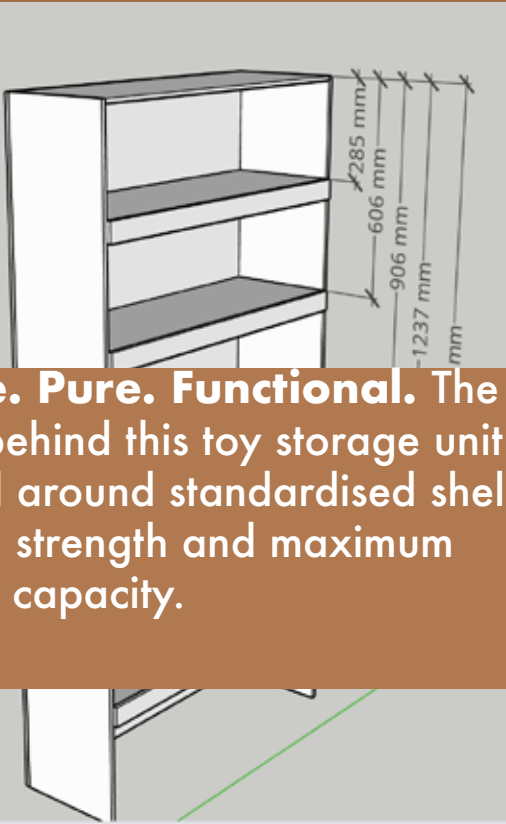
# PLANNING

Down-Selecting

This 3-metre, 4-door entrance wardrobe ticks the box for **large capacity storage** for multiple seasonal coats throughout the year and provides out-of-reach long-term storage in the header unit.



**Simple. Pure. Functional.** The driver behind this toy storage unit evolved around standardised shelf heights, strength and maximum storage capacity.







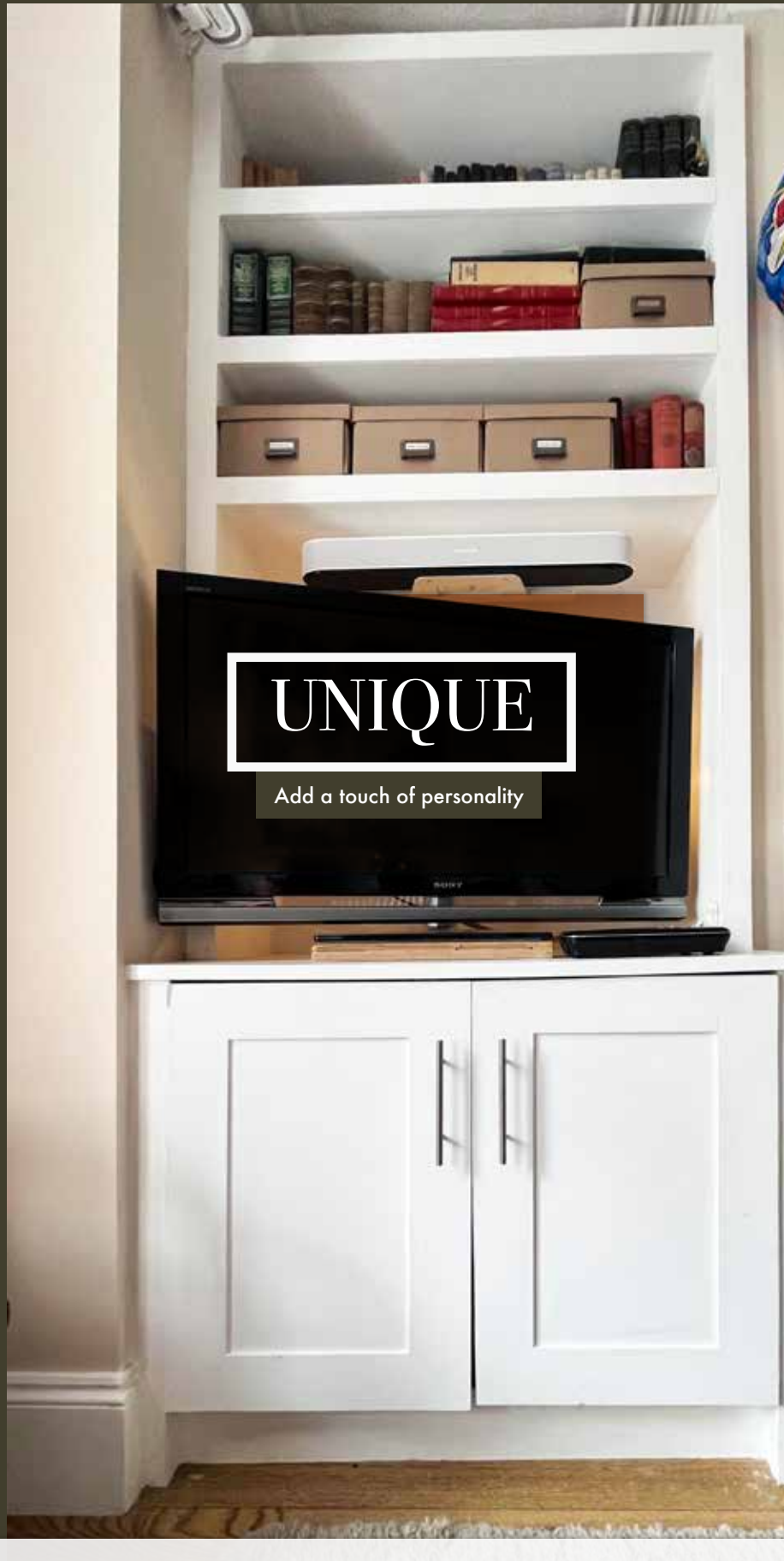
# CREATE

Build the Vision

## Build the Vision

During this creative phase organisation was key as managing for oversized pieces of furniture both from a quality perspective but also ensuring alignment accuracy and finish - all drove both a successful installation and a satisfied client





UNIQUE

Add a touch of personality



CUSTOM

Specify size, shape and colour



STYLE

Functional and beautiful









# SIGN-OFF

## Final Design

Whether you're looking for a bright light oak fitted bedroom or fitted bedroom furniture that is painted to perfectly match your ideal colour, this pure bespoke approach to fitted bedroom furniture creates a place of sanctuary and relaxation.

This video highlights both the technical background to this project and the final build. A true measure of how successful the design, build and installation were - three years later (when these photos were taken) the pieces show they still stand the test of time.

For a no-obligation, design consultation contact Spindlelegs today.



# GET IN TOUCH

[www.spindlelegs.co.uk](http://www.spindlelegs.co.uk)

[info@spindlelegs.co.uk](mailto:info@spindlelegs.co.uk)



SPINDLELEGS



+44 (0) 7971 708027



# ALCOVE FITTED FURNITURE FOR A LONDON VICTORIAN TERRACE

Design. Refine. Prototyped. Get Hyped!





# ALCOVE FITTED FURNITURE FOR A LONDON VICTORIAN TERRACE

Build the Vision